

COMPANY PROFILE OF NABA EXPORTS LTD





Message from Managing Director

**TRUST OF CLIENTS IS OUR GREATEST ASSET,
TOGETHER WE CREATE A BETTER TOMORROW”**

It is my greatest pleasure to introduce to you, a profile of our organization. Founded in 2008, Naba Exports Ltd. is emerging as an epitome of excellence in the world of garments export in Bangladesh. The goal of our organization is to be known as the company that provides the greatest customer satisfaction in entire Bangladesh. We strive towards this by giving impetus to corporate culture of the highest standards, with commitment to service, flexibility of operations and full support in different business scenario. Our top of the line management team consists of individuals hand-picked from the industry with decades of experience in the field of garments export. We focus our efforts strategically towards achievement of higher levels of production, quality and performance. We have been continuously improving in the development of knit queen products for the global market and have provided many complementary designs to our valued clients. Our organization has full capacity to meet the specific requirements of client organizations for the establishment of niche market segments, through relentless commitment to quality. I am glad to assure that our qualified and highly skilled personnel shall deliver the best possible business to your level of requirement. I strongly give credence to our deep commitment to customer satisfaction and reliable services which will ensure our mutual success in this field of business. I take this opportunity to invite you to taking the first step together

OFFICE ADDRESS:

**310 CDA Avenue , Muradpur.
Chittagong ,Bangladesh.**

FACTORY ADDRESS:

**9125/26 ,Shakpura,(Military pool)
Boalkhali, Chittagong .Bangladesh**

BANK DETAILS :

**SHAJALAL ISLAMI BANK LTD
AGRABAD BRANCH
CHITTAGONG
BANGLADESH
ACCOUNT NO :
SWIFT CODE : SJBLBDDHAGB**



Contact Details

Managing Director :

Md.Zahidul Islam (Jewel)

jewel@jastex.net

Directors :

Saiful Islam

Rahat Uddin

Compliance :

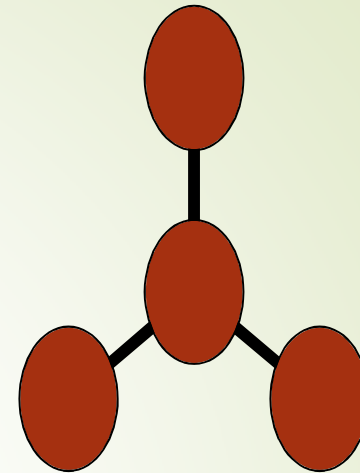
Harilal Chakraborty

compliance.nabaexports@gmail.com

General Manager :

Shakhwat Hossain (Shagor)

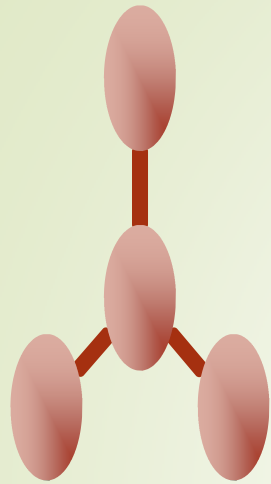
shagor@jastex.net



Turnover P.A. : Eight Million U.S. Dollar.

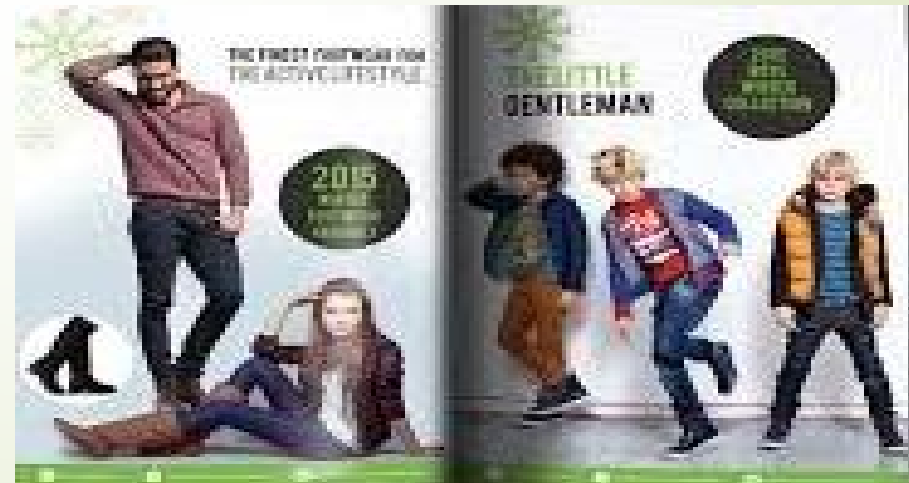
Export Markets : E.E.C countries U.S.A , UK & CANADA





CUSTOMER LIST

- * Regatta (UK)
- * Go-Sport (France)
- * Dare 2B (UK)
- * Wal-Mart
- * Bentex



Factory Details

- PRESENT WORK FORCE : 480 PERSON (Male &Female)
- FLOOR SPACE : 60,000 Sq Ft (Above)
- NO OF MACHINE : 510
- GROUND OF PRODUCT : Padded Jacket ,Camy, Tank Top Shorts, Bermuda,Line Jacket , all kind of woven item.



CURRENT PRODUCT PICTUER

- We are specialized for Padded Jacket ,Trouser, Swimming short, Bermuda, pant etc..



Production Capacity

- 1500,000 pcs : Cargo shorts per month
- 120,000 pcs : Cargo Long Pant
- 300,000 pcs : Swimming shorts
- 65,000 pcs : Padded jacket
- 150,000 pcs : 5 pocket denim



POWER GENARATION

- WE HAVE SETUP 300 KVA GENERATOR WHICH COVERED WHOLE OPERATION OF NABA EXPORTS LTD.



- 20L ELECTICITY BOILER FOR STEAM IRON .



FACTORY FRONT VIEW





Outside field



FLOOR VIEW



FLOOR VIEW



SEWING LINE



FINISHING FLOOR VIEW



FINISHING FLOOR VIEW



CUTTING FLOOR PICTURE



CUTTING FLOOR



Fabric Inspection Machine



Needle Detector Machine

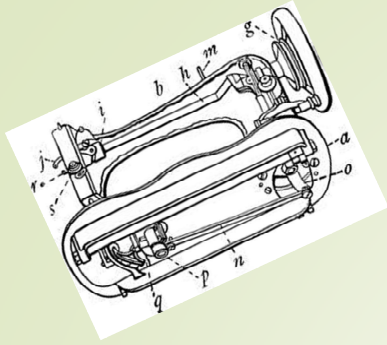


Ironing Section



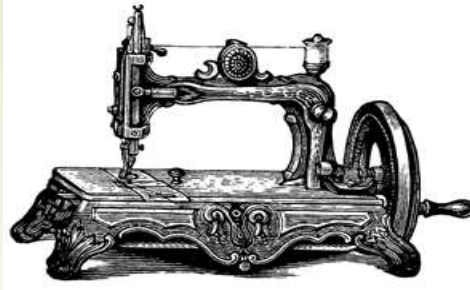


Finishing Section



LIST OF MACHINERIES

➤ AUTO Quilting Machine	→	02 Nos
➤ Plain Machine (Manual)	→	86 Nos
➤ Plain Machine (Computer)	→	191 Nos
➤ Double needle	→	25 Nos
➤ Double needle chine stitch	→	03 Nos
➤ 4- thread over lock	→	89 Nos
➤ Thread Re-cone Machine	→	02 Nos
➤ 5- thread over lock	→	13 Nos
➤ Flat lock Cylinder Bed	→	22 Nos
➤ Flat lock Flat Bed	→	29 Nos
➤ Heat transfer Machine	→	07 Nos
➤ Electricity Boiler	→	01 Nos
➤ Fussing machine	→	01 pcs
➤ Generator (160 KVA)	→	01 pcs
➤ Generator (05 KVA)	→	01 pcs



➤ Picot Machine	→	01 Nos
➤ Rib cutter Machine	→	02 Nos
➤ Cutting Machine	→	03 Nos
➤ Fabric Layer cutting Machine	→	01 Nos
➤ Fabric Inspection Machine	→	01 Nos
➤ Metal Detector	→	01 Nos
➤ Thread shaker Machine	→	01 Nos
➤ Kansai Special	→	07 Nos
➤ Bar Tack (Computer)	→	07 Nos
➤ Button Hole	→	04 Nos
➤ Button Attach	→	02 Nos
➤ Snap Button Machine	→	07 Nos
➤ Back tap Machine	→	01 Nos
➤ Washing Machine	→	<u>01 Nos</u>

Total → 510 Nos